

49/187

DRAWING NUMBER

DRAWING NUMBER

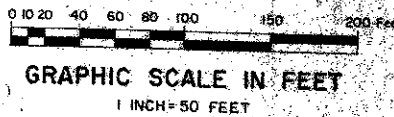
DRAWING NUMBER

PLAT No. 2 HOMES AT LAWRENCE

A PLANNED UNIT DEVELOPMENT

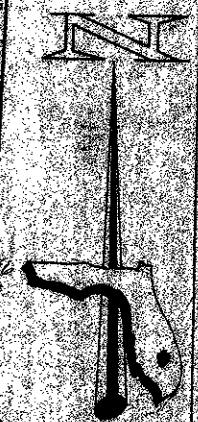
BEING A REPLAT OF A PORTION OF TRACTS 9, 10, 11, 12, 13, AND 16, NORTHEAST 1/4 OF SECTION 12 OF AMENDED PLAT OF SECTION 12, TWP. 45 SOUTH, RGE. 42 EAST, MARY A. LYMAN ET AL, AS RECORDED IN PLAT BOOK 9, P.74 OF THE PUBLIC RECORDS OF PALM BEACH COUNTY, STATE OF FLORIDA.

JUNE 1984 SHEET 2 OF 2

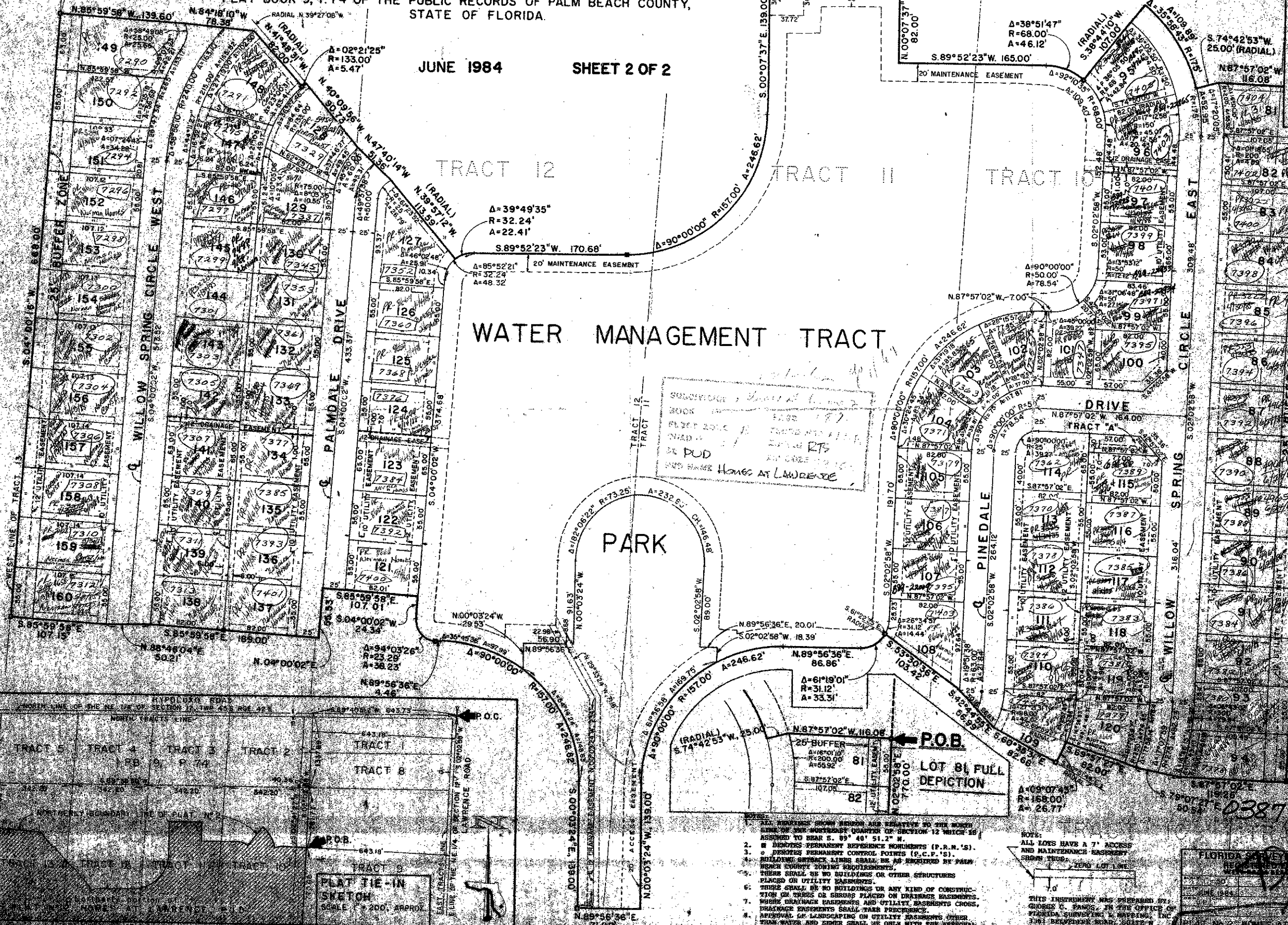


187

STATE OF FLORIDA
COUNTY OF PALM BEACH
PLAT WAS FILED FOR
RECORD AT
THIS DAY OF
APRIL, 1984 AND DULY RECORDED
IN PLAT BOOK ON PAGES
AND
JOHN A. DONKLE, CLERK
CIRCUIT COURT
BY: S.C.



See Plat of Section 12, Twp. 45 S., Rge. 42 E., Plat No. 1, P. 74 of Public Records of Palm Beach County, Florida, for location of Section 12.



- NOTES:
1. ALL DIMENSIONS SHOWN HEREON ARE RELATIVE TO THE NORTH LINE OF THE NORTHEAST QUARTER OF SECTION 12 WHICH IS ASSUMED TO BEAR S. 89° 40' 51.2" W.
 2. * DENOTES PERMANENT REFERENCE MONUMENTS (P.R.M.'S).
 3. ○ DENOTES PERMANENT CONTROL POINTS (P.C.P.'S).
 4. BUILDING SETBACK LINES SHALL BE AS REQUIRED BY PALM BEACH COUNTY ZONING REGULATIONS.
 5. THERE SHALL BE NO BUILDINGS OR OTHER STRUCTURES PLACED ON UTILITY EASEMENTS.
 6. THERE SHALL BE NO BUILDINGS OR ANY KIND OF CONSTRUCTION OR TREES OR SHRUBS PLACED ON DRAINAGE EASEMENTS, WEDGE DRAINAGE EASEMENTS AND UTILITY EASEMENTS CROSS, DRAINAGE EASEMENTS SHALL TAKE PRECEDENCE.
 7. APPROVAL OF LANDSCAPING ON UTILITY EASEMENTS OTHER THAN WATER AND ENERGY SHALL BE ONLY WITH THE APPROVAL OF ALL UTILITIES OCCUPYING SAME.

NOTE:
ALL LOTS HAVE A 7' ACCESS AND MAINTENANCE EASEMENT FROM TRACT 10 TO TRACT 11.

THIS INSTRUMENT WAS PREPARED BY:
GEORGE C. FANGS, JR. IN THE OFFICE OF
FLORIDA SURVEYING & MAPPING, INC.
316 S. WASHINGTON ST., SUITE 200
WEST PALM BEACH, FLORIDA 33406

FLORIDA SURVEYING & MAPPING, INC.
187
JUN 1984